

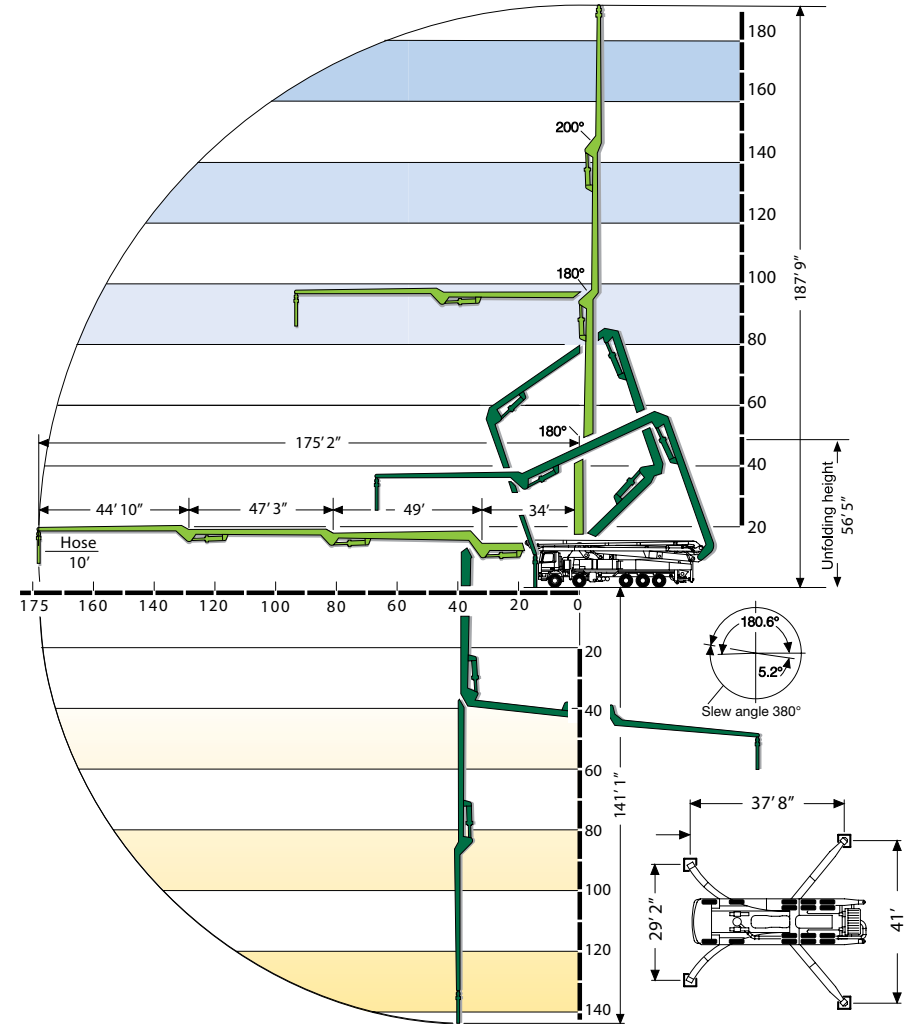
S 58 SX

SPECIFICATIONS

	U.S.	Metric
Vertical Reach	187' 9"	57.2 m
Horizontal Reach	175' 2"	53.4 m
Below Grade Reach w/ Tip Hose	141' 1"	43 m
Pipeline Diameter	5 in	125 mm
Boom Type/ Sections	Overhead Roll & Fold® / 4	
Boom Rotation	380 degrees	
Unfolding Height	56' 5"	17.2 m
Outrigger Type- Front	Super X, Hydraulic Extension & Jacking	
Outrigger Type- Rear	Hydraulic Slewing & Jacking	
Outrigger Soil Pressure w/o Dunnage (front/rear)	760/739 psi	52.4/51 bar
Outrigger Soil Pressure w/ Dunnage (front/rear)	67/65 psi	4.6/4.5 bar
Outrigger Width, Front	29' 2"	8.9 m
Outrigger Width, Rear	41'	12.5 m
Outrigger Length	37' 8"	11.5 m

PUMP SPECIFICATIONS

	U.S.	Metric
Theor. Concrete Output	213 cu yds/h	163 cu m/h
Max. Pressure on Concrete	1169 psi	80 bar
Max. Strokes Per Minute	22	
Max. Aggregate size	2.5 in	63.5 mm
Material Cylinder Diameter	10 in	254 mm
Material Cylinder Stroke	98 in	2500 mm
Differential Cylinder Diameter	4.7 in	120 mm
Maximum Oil Flow	158.5 gal/min	600 l/min
Hydraulic Circuitry Type	MPS	
Valve Type	B Rock	



Downward Pressures
 Front legs - 370kn
 Back legs - 360kn

*Pump specifications are for standard units. Other units are available. Specifications are subject to change without prior notice.

